

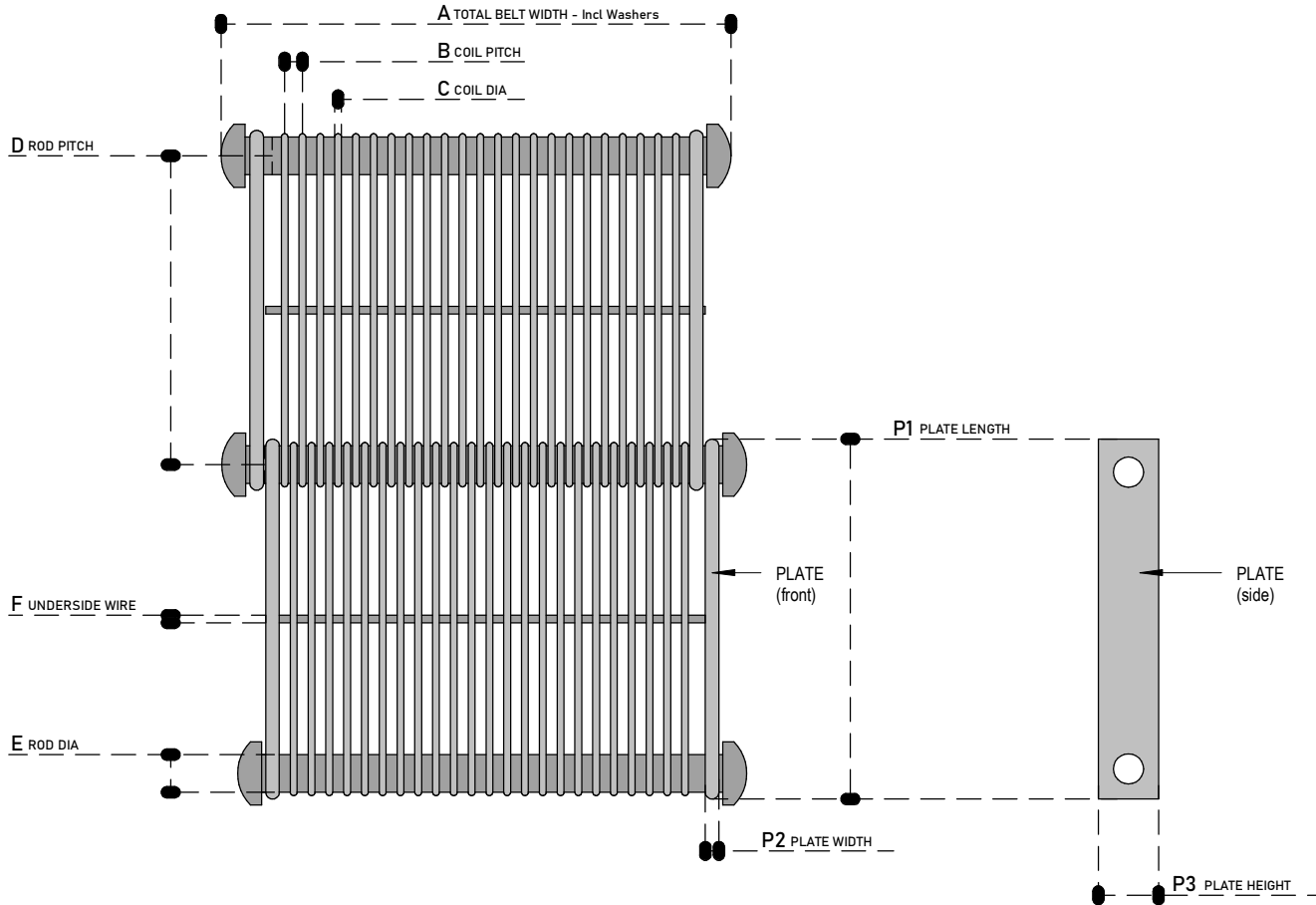
**BELT TYPE**

STRAIGHT RUNNING BELT Positive Drive : Chain & Sprockets	X
STRAIGHT RUNNING BELT Friction Drive : Rollers	
TURN & SPIRAL BELT Positive Drive : Chain & Sprockets	

**WIRE BELTING**

NOTE: PITCH MEASUREMENT IS CENTRE TO CENTRE | MEASUREMENTS ARE ALL IN 'mm'

TOTAL BELT LENGTH :
A - TOTAL BELT WIDTH (NB Incl. Washers) :
B - COIL PITCH :
C - COIL DIA :
D - ROD PITCH :
E - ROD DIA :
BELT MATERIAL :
P1 - PLATE LENGTH :
P2 - PLATE WIDTH :
P3 - PLATE HEIGHT :
F - UNDERSIDE WIRE DIA :
NUMBER OF UNDERSIDE WELDED WIRES :



DRAWING : Eyelink Belt - with Plates

**Tegman**  
(PTY) LTD

[www.tegman.co.za](http://www.tegman.co.za)

[sales@tegman.co.za](mailto:sales@tegman.co.za)

031 563 4252 / 072 299 4947