

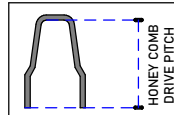
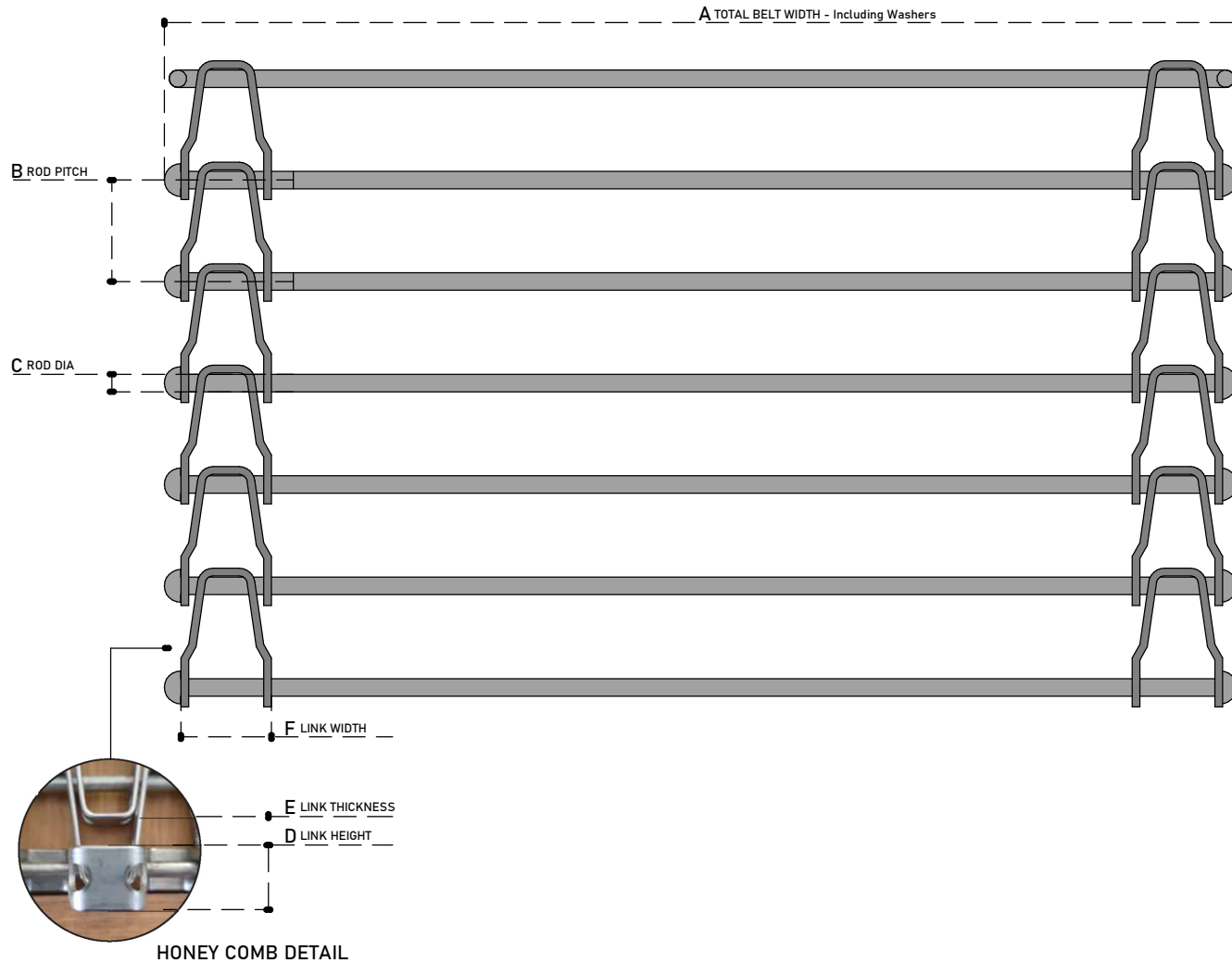
**BELT TYPE**

STRAIGHT RUNNING BELT Positive Drive : Chain & Sprockets	X
STRAIGHT RUNNING BELT Friction Drive : Rollers	
TURN & SPIRAL BELT Positive Drive : Chain & Sprockets	X

**WIRE BELTING**

NOTE: PITCH MEASUREMENT IS CENTRE TO CENTRE | MEASUREMENTS ARE ALL IN 'mm'

TOTAL BELT LENGTH :
A - TOTAL BELT WIDTH :
B - ROD PITCH :
C - ROD DIAMETRE :
D - LINK HEIGHT
E - LINK THICKNESS
F - LINK WIDTH
BELT MATERIAL :



STD PITCHES :

19.05mm	
25.4mm	
27.43mm	
30mm	
30.5mm	
38.1mm	

DRAWING : Flexible Rod / Freezer Belt - Rod Only

**Tegman**  
(PTY) LTD

[www.tegman.co.za](http://www.tegman.co.za)

[sales@tegman.co.za](mailto:sales@tegman.co.za)

031 563 4252 / 072 299 4947