

BELT TYPE

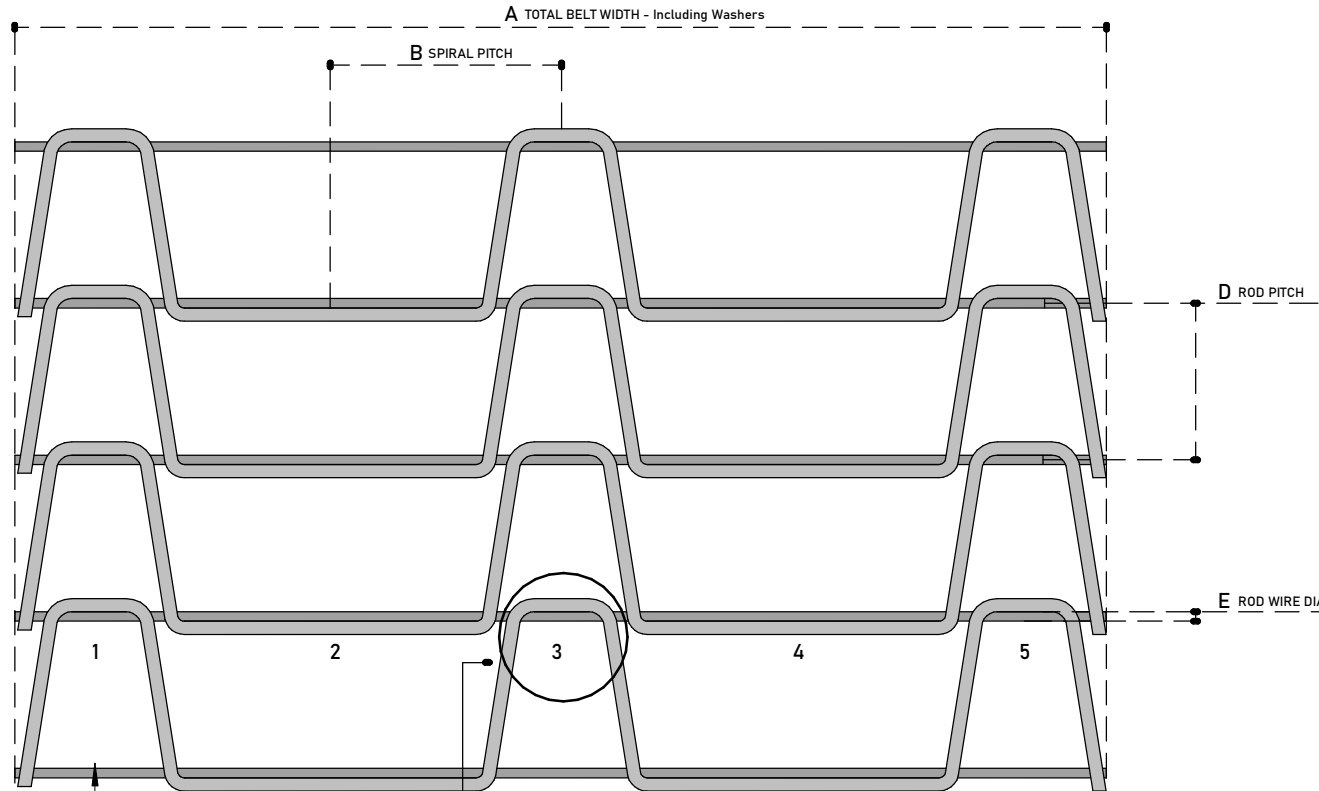
STRAIGHT RUNNING BELT Positive Drive : Chain & Sprockets	X
STRAIGHT RUNNING BELT Friction Drive : Rollers	
TURN & SPIRAL BELT Positive Drive : Chain & Sprockets	

WIRE BELTING

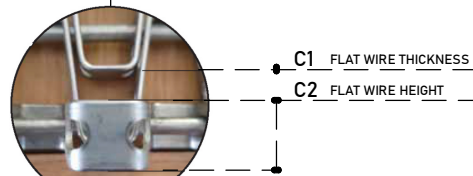
NOTE: PITCH MEASUREMENT IS CENTRE TO CENTRE | MEASUREMENTS ARE ALL IN 'mm'

TOTAL BELT LENGTH :
A - TOTAL BELT WIDTH (NB incl Washers) :
B - SPIRAL PITCH :
C1 - FLAT WIRE THICKNESS :
C2 - FLAT WIRE HEIGHT :
D - ROD PITCH
E - ROD WIRE DIA.
MATERIAL :
SPACES IN WIDTH :

ROD PITCHES :	
12.7mm	
15.875mm	
19.05mm	
25.4mm	
27.43mm	
28mm	
30mm	
30.5mm	
31.75mm	
38.1mm	



Note: Count "spaces" in width (always odd number)



HONEY COMB DETAIL

DRAWING : Tri Harp Honeycomb Belt

Tegman

(PTY) LTD

www.tegman.co.za

sales@tegman.co.za

031 563 4252 / 072 299 4947