

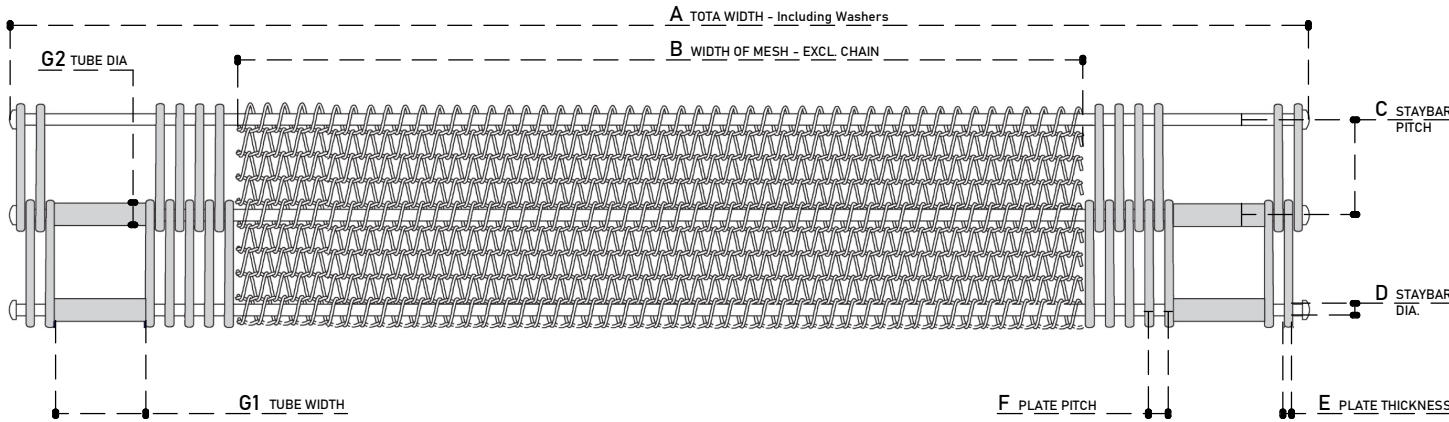
**BELT TYPE**

STRAIGHT RUNNING BELT Positive Drive : Chain & Sprockets	X
STRAIGHT RUNNING BELT Friction Drive : Rollers	
TURN & SPIRAL BELT Positive Drive : Chain & Sprockets	

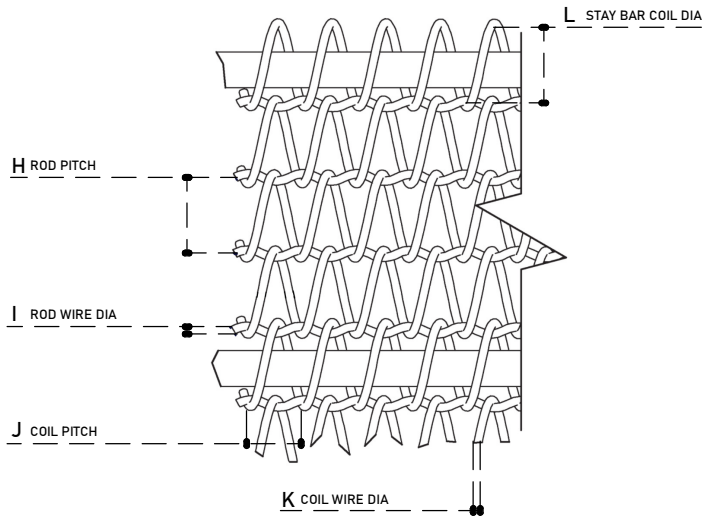
**WIRE BELTING**

NOTE: PITCH MEASUREMENT IS CENTRE TO CENTRE | MEASUREMENTS ARE ALL IN 'mm'

TOTAL BELT LENGTH :
A - TOTAL WIDTH (NB Incl. Washers) :
B - WIDTH OF MESH EXCL. CHAIN :
C - STAYBAR PITCH :
D - STAYBAR DIA :
STAYBAR MATERIAL :
E - PLATE THICKNESS :
F - PLATE PITCH :
PLATE MATERIAL :
G1 - TUBE WIDTH :
G2 - TUBE DIA :
H - ROD PITCH :
I - ROD WIRE DIA. :
J - COIL PITCH :
K - COIL WIRE DIA. :
L - STAYBAR COIL PITCH :
COIL MATERIAL :
ROD END FINISH TO CHAIN :
MUSHROOM : <input type="checkbox"/>
WELDED TO CHAIN : <input type="checkbox"/>
WASHER WELDED : <input type="checkbox"/>
COTTERED : <input type="checkbox"/>



**WEAVE CONSTRUCTION**



DRAWING : Specialised Balance Weave Belt

**Tegman**  
(PTY) LTD

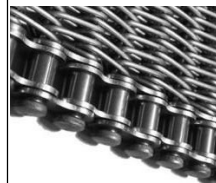
[www.tegman.co.za](http://www.tegman.co.za)

[sales@tegman.co.za](mailto:sales@tegman.co.za)

031 563 4252 / 072 299 4947



COTTERED EDGE



MUSHROOM EDGE



WASHER WELD EDGE