

BELT TYPE

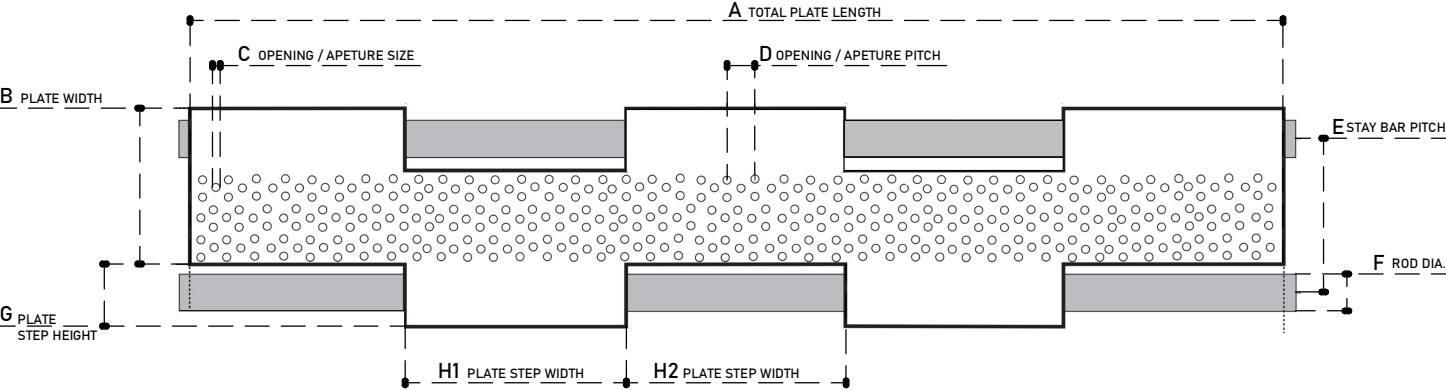
STRAIGHT RUNNING BELT Positive Drive : Chain & Sprockets	X
STRAIGHT RUNNING BELT Friction Drive : Rollers	
TURN & SPIRAL BELT Positive Drive : Chain & Sprockets	

WIRE BELTING

NOTE: PITCH MEASUREMENT IS CENTRE TO CENTRE | MEASUREMENTS ARE ALL IN 'mm'

A - TOTAL PLATE LENGTH :
B - TOTAL PLATE WIDTH :
C - OPENING / APETURE SIZE :
D - OPENING / APETURE PITCH :
E - STAY BAR PITCH :
F - ROD DIA :
G - PLATE STEP HEIGHT
H1 - PLATE STEP WIDTH :
H2 - PLATE STEP WIDTH :
PLATE MATERIAL :
PLATE THICKNESS :

(NOTE : "PLATE BELT" DRAWING MUST BE INCLUDED)



DRAWING : Plate Belt - Plate Only

Customer :	_____
Contact Person :	_____
Contact Number:	_____
Email :	_____

APPROVED FOR MANUFACTURE
SIGNATURE:

www.tegman.co.za

sales@tegman.co.za

031 563 4252 / 072 299 4947