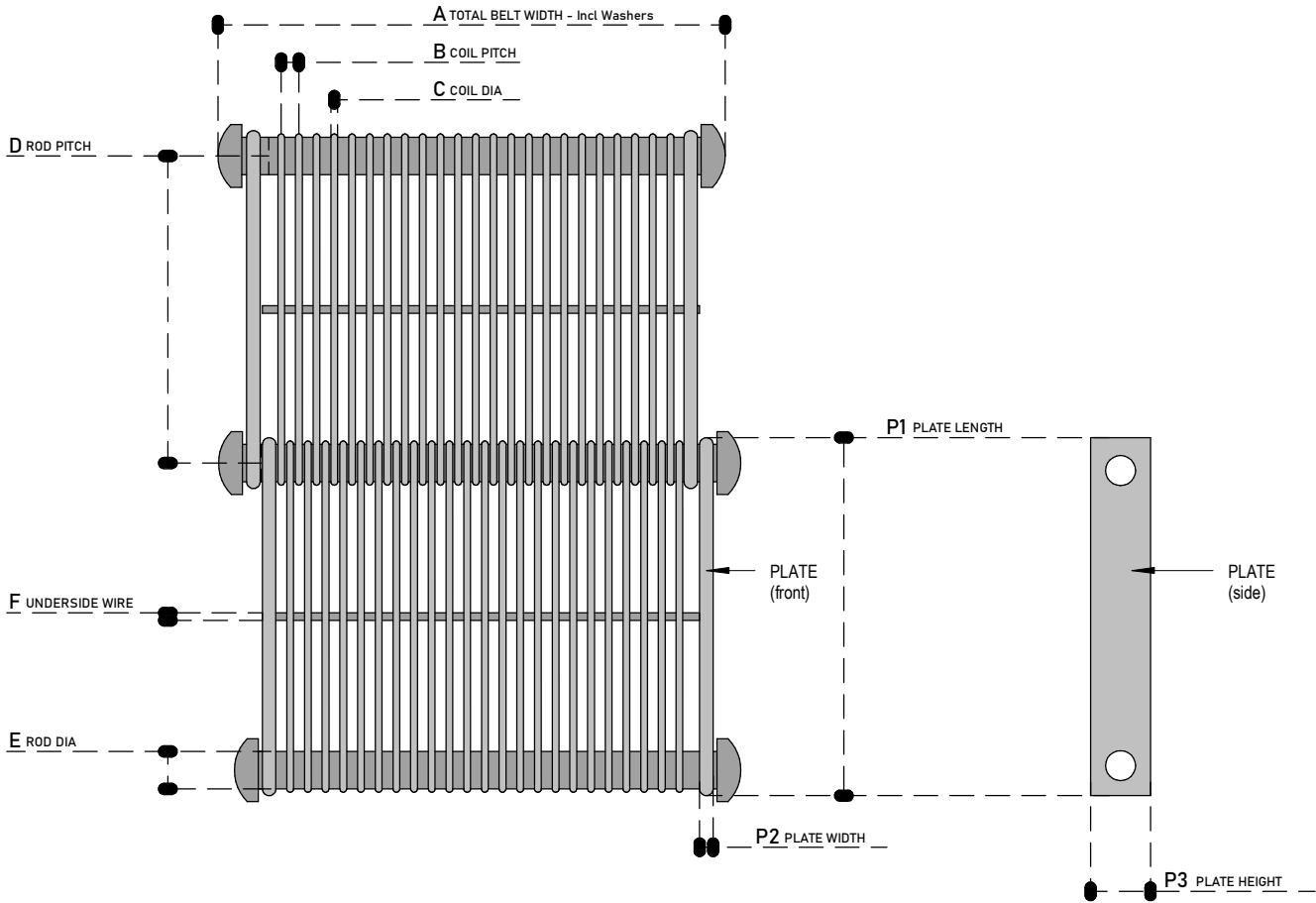


BELT TYPE

STRAIGHT RUNNING BELT Positive Drive : Chain & Sprockets	X
STRAIGHT RUNNING BELT Friction Drive : Rollers	
TURN & SPIRAL BELT Positive Drive : Chain & Sprockets	



WIRE BELTING

NOTE: PITCH MEASUREMENT IS CENTRE TO CENTRE | MEASUREMENTS ARE ALL IN 'mm'

TOTAL BELT LENGTH :
A - TOTAL BELT WIDTH (NB Incl. Washers) :
B - COIL PITCH :
C - COIL DIA :
D - ROD PITCH :
E - ROD DIA :
BELT MATERIAL :
P1 - PLATE LENGTH :
P2 - PLATE WIDTH :
P3 - PLATE HEIGHT :
F - UNDERSIDE WIRE DIA :
NUMBER OF UNDERSIDE WELDED WIRES :

Tegman
(PTY) LTD

DRAWING : Eyelink Belt - with Plates

Customer :	_____
Contact Person :	_____
Contact Number:	_____
Email :	_____

APPROVED FOR MANUFACTURE
SIGNATURE:

www.tegman.co.za

sales@tegman.co.za

031 563 4252 / 072 299 4947