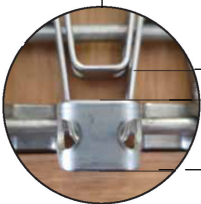
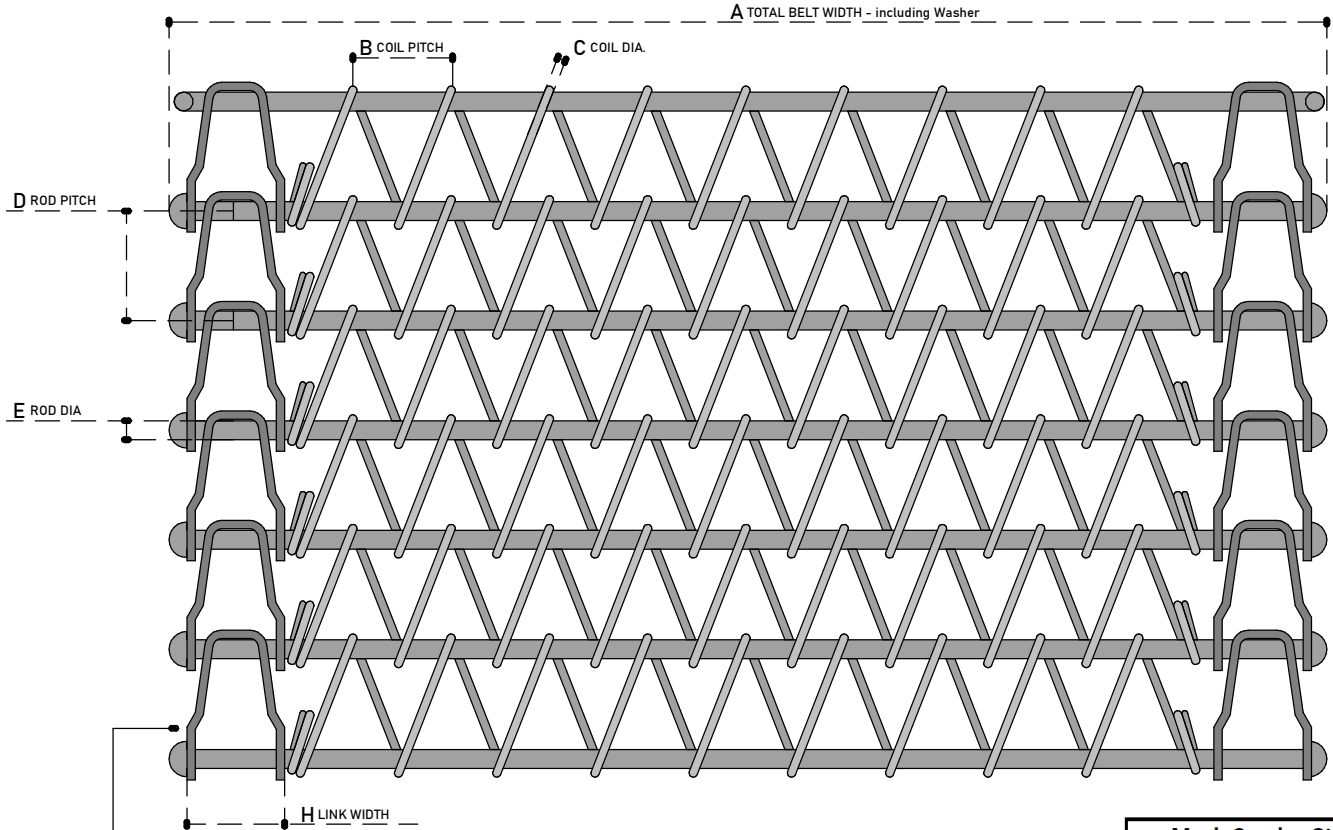


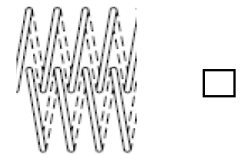
BELT TYPE

STRAIGHT RUNNING BELT Positive Drive : Chain & Sprockets	X
STRAIGHT RUNNING BELT Friction Drive : Rollers	
TURN & SPIRAL BELT Positive Drive : Chain & Sprockets	X

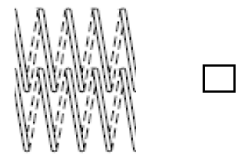


HONEY COMB DETAIL

Mesh Overlay Styles



Standard Balanced Weave

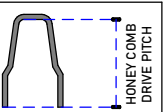


Unilateral Weave

WIRE BELTING

NOTE: PITCH MEASUREMENT IS CENTRE TO CENTRE | MEASUREMENTS ARE ALL IN 'mm'

TOTAL BELT LENGTH :
A - TOTAL BELT WIDTH (NB incl Washers) :
B - COIL PITCH :
C - COIL DIAMETRE :
D - ROD PITCH
E - ROD DIAMETRE :
F - LINK THICKNESS :
G - LINK HEIGHT
H - LINK WIDTH
BELT MATERIAL :
HOW MANY RODS & COILS OVER 30cm :



STD PITCHES :

19.05mm	
25.4mm	
27.43mm	
30mm	
30.5mm	
38.1mm	

Tegman
(PTY) LTD

DRAWING : Flexible Rod / Freezer Belt - Spiral

Customer :	_____
Contact Person :	_____
Contact Number:	_____
Email :	_____

APPROVED FOR MANUFACTURE
SIGNATURE:

www.tegman.co.za

sales@tegman.co.za

031 563 4252 / 072 299 4947