

**BELT TYPE**

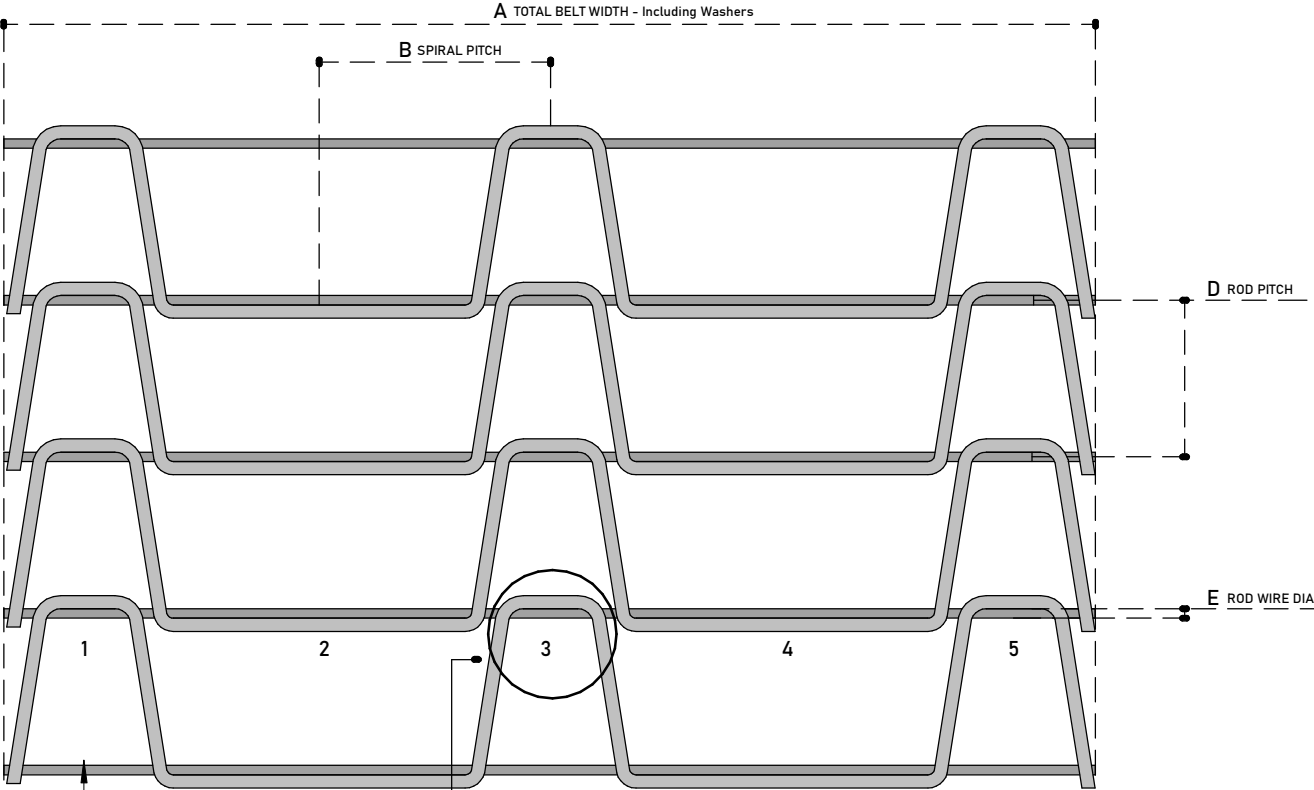
STRAIGHT RUNNING BELT Positive Drive : Chain & Sprockets	X
STRAIGHT RUNNING BELT Friction Drive : Rollers	
TURN & SPIRAL BELT Positive Drive : Chain & Sprockets	

**WIRE BELTING**

NOTE: PITCH MEASUREMENT IS CENTRE TO CENTRE | MEASUREMENTS ARE ALL IN 'mm'

TOTAL BELT LENGTH :
A - TOTAL BELT WIDTH (NB incl Washers) :
B - SPIRAL PITCH :
C1 - FLAT WIRE THICKNESS :
C2 - FLAT WIRE HEIGHT :
D - ROD PITCH
E - ROD WIRE DIA.
MATERIAL :
SPACES IN WIDTH :

ROD PITCHES :	
12.7mm	
15.875mm	
19.05mm	
25.4mm	
27.43mm	
28mm	
30mm	
30.5mm	
31.75mm	
38.1mm	



**Tegman**  
(PTY) LTD

**DRAWING : Tri Harp Honeycomb Belt**

Customer :	_____
Contact Person :	_____
Contact Number:	_____
Email :	_____

APPROVED FOR MANUFACTURE  
SIGNATURE:

[www.tegman.co.za](http://www.tegman.co.za)  
[sales@tegman.co.za](mailto:sales@tegman.co.za)  
031 563 4252 / 072 299 4947